

Eco-Til™ High Impact, Minimal Tillage



Eco-Til™ is a proprietary High Impact, Minimal Tillage technique used when mounted behind a sub-soil plow use to close the rip-line and thoroughly fractures soil without any inversion. This technique uses offset coulters mounted in a Stump Jump™ configuration to harness the effect of lateral forces that thoroughly break soil bulk density uniformly across a 65 cm wide x 40cm deep zone.

This technique provides the most ideal soil impact in areas with thin topsoils and erosion prone soils. The use of relieving coulters with the patented Stump Jump™ hydraulic relief system allows soil conditioning to be accomplished with minimal removal of previous harvest debris. Eco-Til™ is the most cost effective way to replace ripping and offset ripping typically provided with higher powered dozers or skidders.



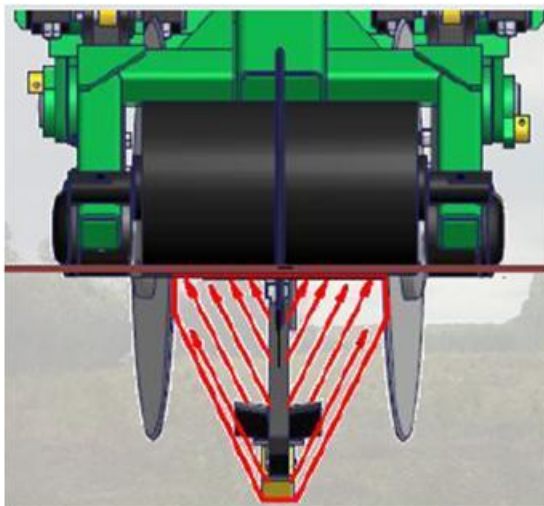
www.savannahglobal.com

sg@savannahglobal.com

+1 (912) 964-2214 Outside / US 1 800 240-8358 In the US

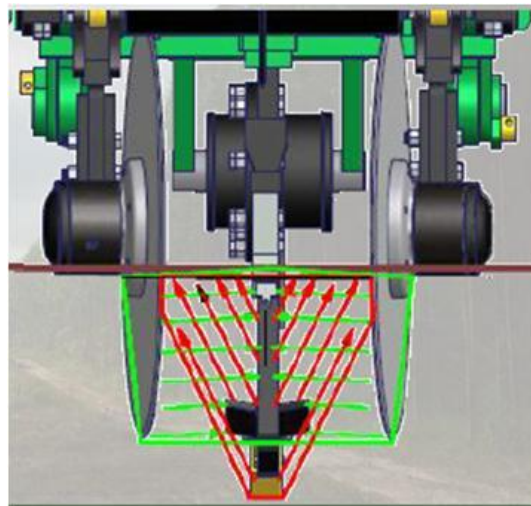


ECO-TIL™
Savannah®

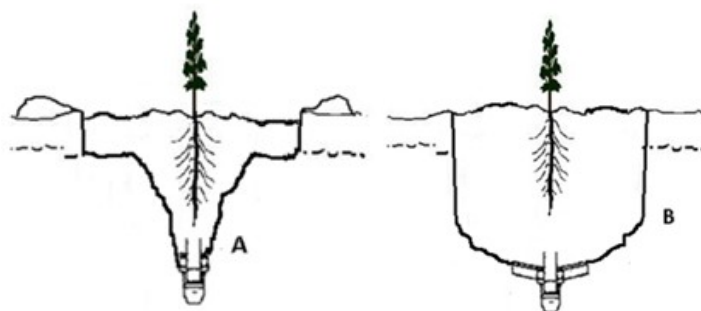
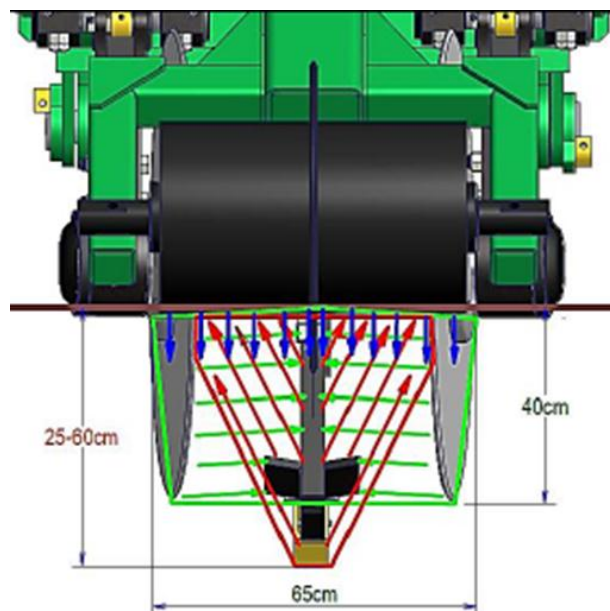


Impact from Front Coulters/Sub-Soil Tine

- The front High Tensile Steel Coulters lead a Swept Sub-Soiling Tine with a replaceable sub-soil wing that fractures and lift soil without inverting.
- Sub-soiling depths range from 40cm – 80cm through any level of debris.
- Stump-Jump[™] Assemblies with 40" High Tensile Steel Coulters slightly offset to produce optimum penetration and lift over stumps, allow lateral forces from each face of the coulters creates a high impact tillage forces that resonate left to right to form a 65cm wide non-inverted tillage zone that is free of air voids
- The absence of soil inversion prevents mixing of soil horizons, in accordance with the principles of minimum cultivation.
- A added roller assembly can be added when additional mixing of surface soil or compaction is desired



Impact from Offset Stump-Jump[™] Coulters



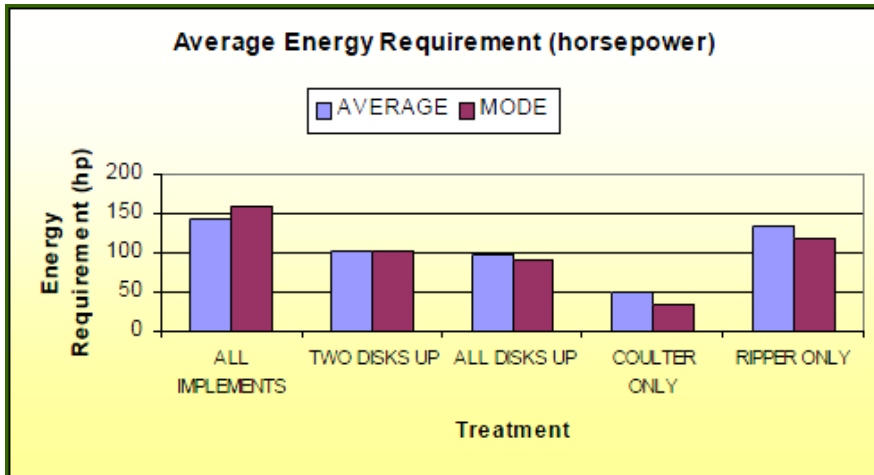
Standard Sub-Soil

Eco-Til[™] High Impact Minimal Tillage

DEALER INFORMATION

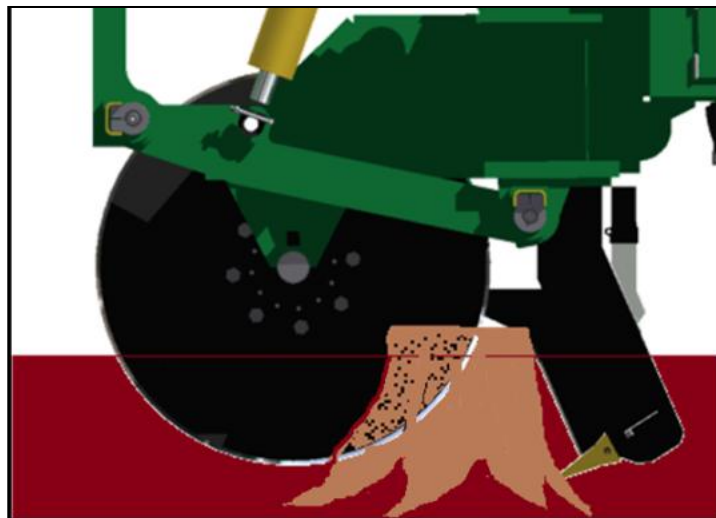


Savannah Forestry Equipment, LLC
P.O. Box 8606
Savannah, GA 31412



Auburn University study USA: Illustrates that the Coulters in Reforestation requires less horsepower to than any other work tool currently used to impact soil.

- Offset 40" AR400 Coulters on Stump Jump™ Arms for Relief over Stumps and Rocks
- High Impact-Minimal Tillage
- Swept Back Sub-soil Tyne Moves Freely Through Root Matter and Stumps.
- Modular Design Allows Flexibility to upgrade to older Savannah plows.
- Non Inverted Soil Fracture
- Enhances Single Shank Sub-soiling to create Superior Planting Zone
- Cuts Through Debris, Delineates, Eliminates Debris Impregnation into Treated Area



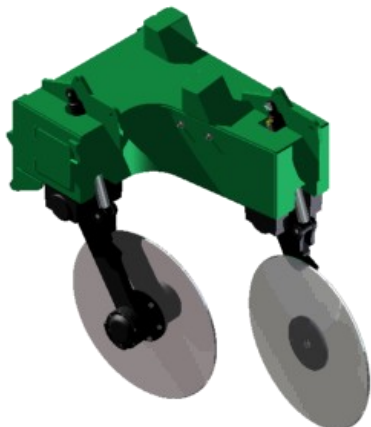
The Savannah® Sub-Soil Arrangement uses a AR400 48" Coulters that efficiently rolls through stumps and roots so the leading edge of the "Swept Back Ripper" penetrates and splits the stump without stalling the tractor or displacing the stump.

DEALER INFORMATION



Savannah Forestry Equipment, LLC
P.O. Box 8606
Savannah, GA 31412

Configurations



ECO-TIL™ 200 Base Assembly Fits Various Sub-Soil Assemblies or Used to Convert Older Savannah Plows



ECO-TIL™ 200L Base Assembly for Smaller Tractors



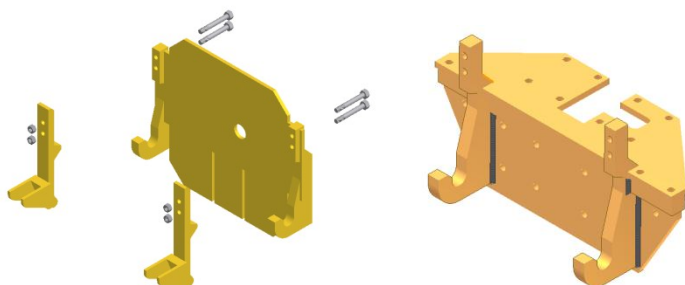
ECO-TIL™ 400 Bull Dozer Mount



ECO-TIL™ 400S Skidder Mount



ECO-TIL™ 300 Trailing Configuration



J-HOOK Quick Hitch Adapter Kit: Allows Contractors to Convert Older Savannah Sub-Soil Plows to the Eco-Til™ Configuration

DEALER INFORMATION

Empty space for dealer information



Savannah Forestry Equipment, LLC
 P.O. Box 8606
 Savannah, GA 31412